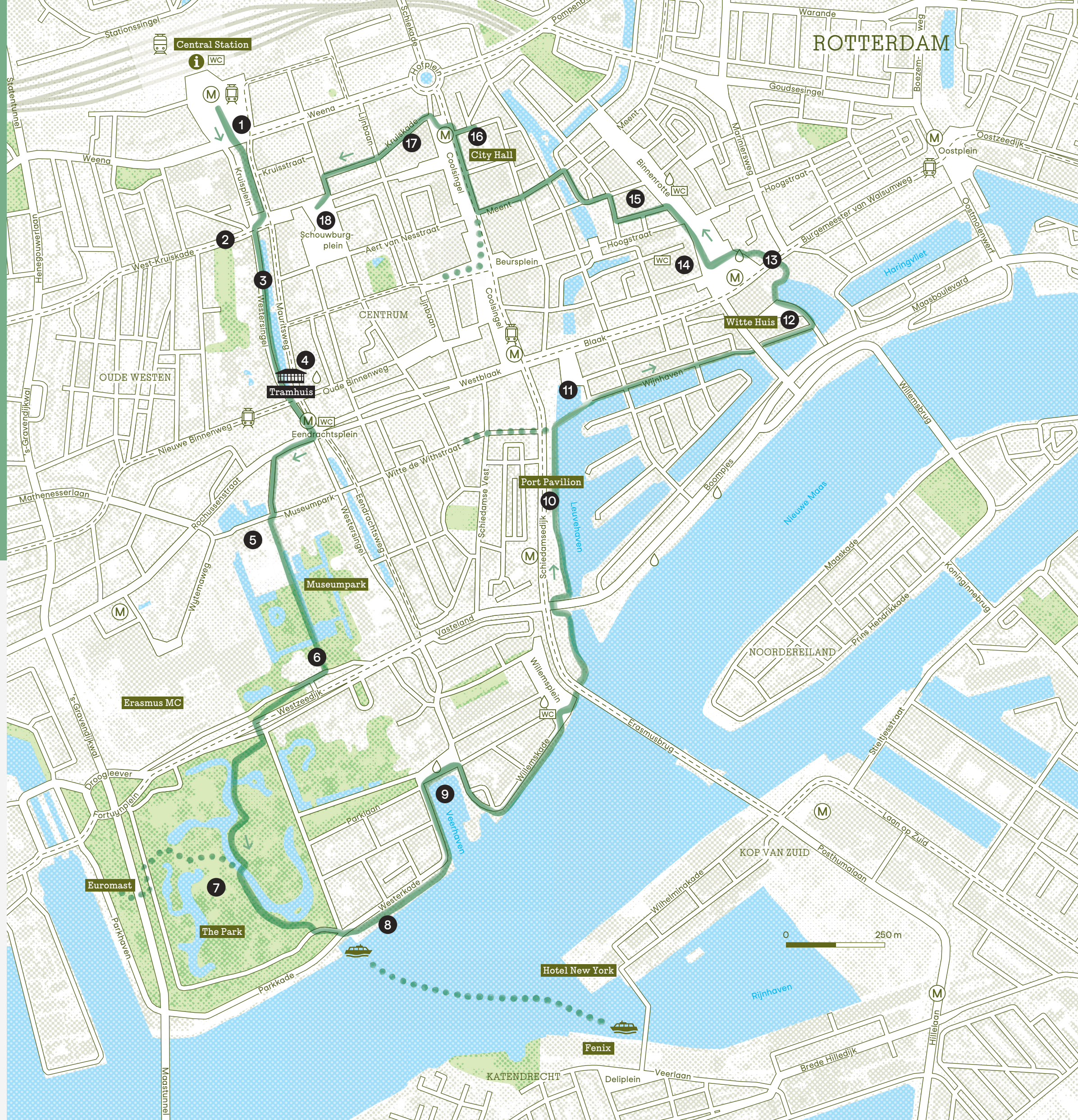


- 1 Moments Contained
- 2 West-Kruiskade
- 3 Sculpture Terrace
- 4 Tramhuis
- 5 Depot Boijmans Van Beuningen
- 6 Kunsthal
- 7 The Park
- 8 View of Fenix
- 9 Veerhaven
- 10 Port Pavilion
- 11 Leuvehaven
- 12 Witte Huis
- 13 Cube Houses
- 14 Markthal
- 15 Laurenskerk
- 16 City Hall
- 17 Oude Luxor
- 18 Schouwburgplein



City walk

Step by step around Rotterdam



Rotterdam at your feet

This walk has been created by Tramhuis, the kiosk for city walks. The walk starts at Central Station, where the Rotterdam Tourist Information city hosts can help you with advice, information about the Rotterdam City Card, tickets and a map.

🚶 7 KM (ABOUT 4.5 MILES)
🕒 AROUND 2 HOURS



1 Moments Contained

'Moments Contained' by Thomas J Price stands on the plaza outside the station. This bronze sculpture was installed in 2023 and symbolises the feeling of being seen as "the other". The woman appears strong and self-assured, yet also vulnerable.



3 Sculpture Terrace

The Sculpture Terrace is a canalside promenade with an impressive collection of sculptures, featuring contemporary works and icons like 'l'Homme qui marche' by Auguste Rodin.

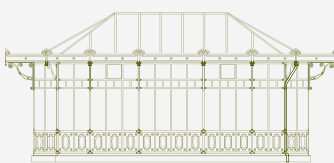


2 West-Kruiskade

West-Kruiskade is the city at its most colourful: a lively high street, where flavours from all over the globe come together. Let the delicious aromas of new and exciting dishes guide you on a culinary journey around the world, right here in the heart of Rotterdam.

4 Tramhuis

Tramhuis is Rotterdam's kiosk for city walks. It's the ideal starting point for discovering the city's highlights and hidden gems on foot. Join a walk with a tour guide or explore at your own pace by following the routes in the Tramhuis app and booklets. Our walks will show you the city from a new perspective.



5 Depot

The Depot of Museum Boijmans Van Beuningen is the world's first art depot to open to the public and houses over 155,000 works. You'll find it in the heart of Museumpark, alongside the Nieuwe Instituut, Huis Sonneveld and Chabot Museum.



7 The Park

This park is a lush, green oasis where you can escape the city buzz and find a moment of calm. Tip: visit the Parkpaviljoen to learn about the park's ecology, activities and community.



6 Kunsthal

The Kunsthal opened in 1992 in this building, which was designed by architect Rem Koolhaas. The gallery is known for its dynamic programme of temporary exhibitions with broad appeal. The Natural History Museum Rotterdam is right next door.



8 View of Fenix

Look over the water from the dock, and you'll see Fenix, the new art museum that shares stories of migration: of love, leaving home and feeling at home, identity and seeking happiness.

Want to cross the Maas river? Book a **water taxi** and see the city and the famous Erasmus Bridge from the water.

9 Veerhaven

Grand townhouses line the dockside while historic ships bob gently on the water, creating a vivid impression of Rotterdam's rich maritime history. The Wereldmuseum is also here on the waterfront.



10 Port Pavilion

The Port Pavilion is an interactive introduction to Rotterdam's port. Get information and advice from the enthusiastic Port Hosts and find inspiration to help you get the most out of your visit to Europe's largest port.

Ready for a drink or a bite to eat? **Witte de Withstraat** is just around the corner – a famous street packed with lively bars and restaurants.



12 Witte Huis

The Witte Huis, completed in 1898, was the Netherlands' first skyscraper and was the tallest office building in Europe at the time. Built on Rotterdam's soft ground, this remarkable feat of engineering formed the beginning of the city's modern skyline.

14 Markthal

You can eat, drink and shop in this covered market hall – but people live here too! The entire ceiling is covered in a gigantic artwork spanning 11,000 square metres.



11 Leuvehaven

Surrounded by the historic ships and cranes in this harbour, you can really get a feel for the port's early beginnings. Next to the Maritime Museum stands 'The Destroyed City' by Ossip Zadkine, marking the German bombing of Rotterdam in 1940.



13 Cube Houses

These striking yellow houses were designed by architect Piet Blom. He wanted to create a village within the city and compared these houses to trees. Curious about what they look like inside? The Kijk-Kubus is open to visitors.



15 Laurenskerk

The Laurenskerk is Rotterdam's only surviving medieval building. And the statue of Erasmus that stands outside the church is the Netherlands' oldest statue.

This neighbourhood is a **shopper's paradise** – from the high street names on Koopgoot and Lijnbaan to the stylish boutiques on the Meent.



17 Oude Luxor

When the Luxor Theatre opened in 1917, it was the biggest cinema in the country. Now it's one of Rotterdam's most characterful theatres and a much-loved venue for a night out.

Your walk ends here. You're just a few minutes away from Central Station – or you could stay and explore more of Rotterdam! This map offers just a taste of what the city has to offer. Our Tramhuis routes dive deeper into Rotterdam's stories.



16 City Hall

Rotterdam's City Hall was built at the start of the twentieth century and still serves as the city's administrative heart. Tip: there's a tranquil green courtyard tucked within its walls. It's free to visit during the day.



18 Schouwburgplein

This plaza is Rotterdam's cultural heart. It's home to De Doelen, the city's premier concert hall, where the world's finest musicians take to the stage.

So much more to discover



See all the Tramhuis routes



More tips for your visit to Rotterdam